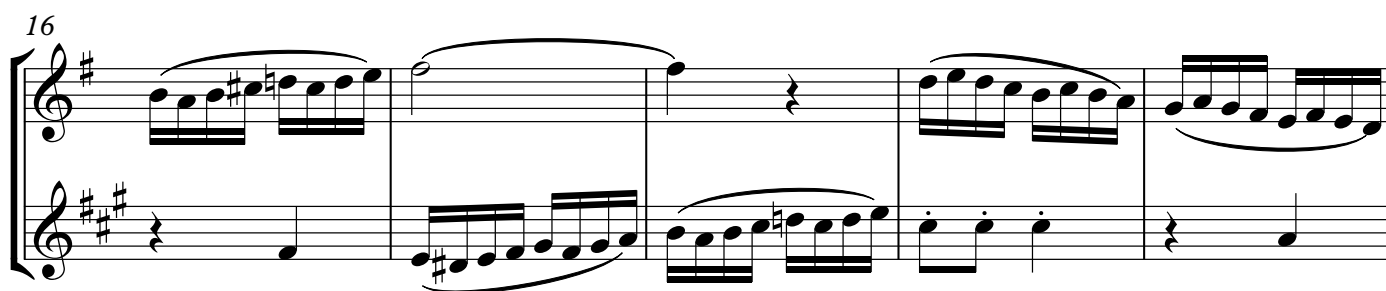


"DUETO PARA QUENA Y SAXOFÓN TENOR"

Breve Preludio para Estudio

Luis Alberto Reyes Santiesteban

Vivace con vigore e anima ♩ = 110



27

System 1 (Measures 27-32): Treble staff features eighth-note patterns, often beamed in pairs. Bass staff provides a steady accompaniment with quarter notes and eighth-note pairs.

33

System 2 (Measures 33-37): Treble staff includes eighth-note runs and measures with whole rests. Bass staff continues the accompaniment with eighth-note pairs and quarter notes.

38

System 3 (Measures 38-42): Treble staff features eighth-note runs and a half note. Bass staff continues the accompaniment with eighth-note pairs and quarter notes.

43

System 4 (Measures 43-47): Treble staff includes eighth-note runs and quarter notes. Bass staff continues the accompaniment with eighth-note pairs and quarter notes.

48

System 5 (Measures 48-52): Treble staff features eighth-note runs and quarter notes. Bass staff continues the accompaniment with eighth-note pairs and quarter notes.

53

System 6 (Measures 53-57): Treble staff includes eighth-note runs and a trill. Bass staff continues the accompaniment with eighth-note pairs and quarter notes. The system concludes with a first and second ending.